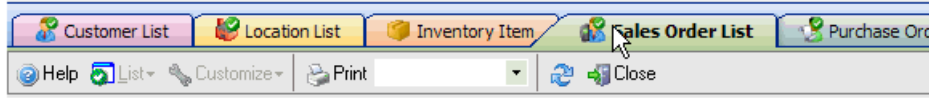


The All Orders User Interface

Last Modified on 11/01/2021 12:47 pm EDT

All Orders allows you to have several lists, entry forms and editors open at the same time. Each new window that is open creates a tab just under the main toolbar.



You can easily switch between open items by clicking its corresponding tab. You can have as many or as few tabs open as you like. To close a particular tab click the X button, located on the far right-hand side of your row of tab.

Copyright © 2012-1999 NumberCruncher.com, Inc. All rights reserved.
