

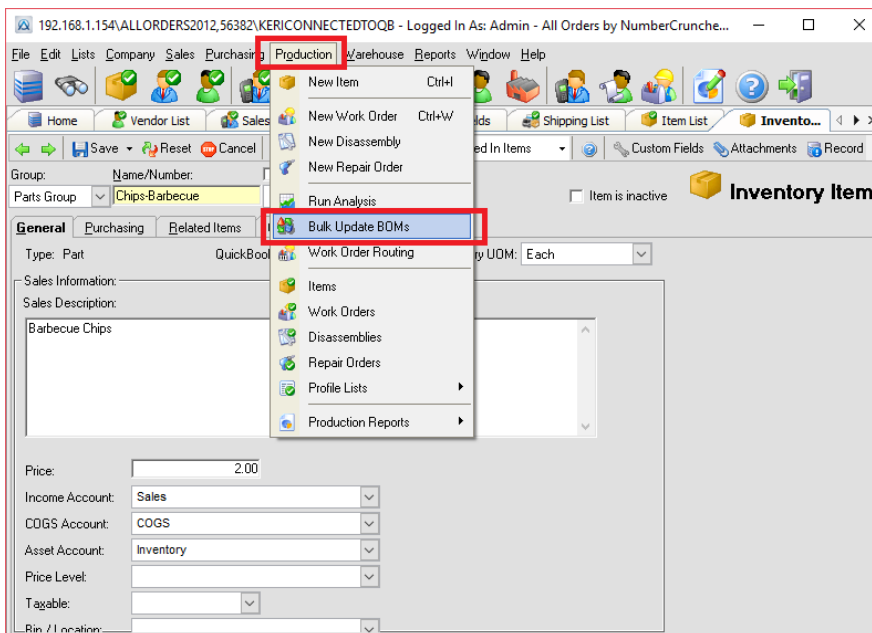
# How can I find a list of BOM's that contain a specific component?

Last Modified on 03/31/2021 3:28 pm EDT

If you have a component and you need a list of exactly where that component has been used, you can use one of the two methods below.

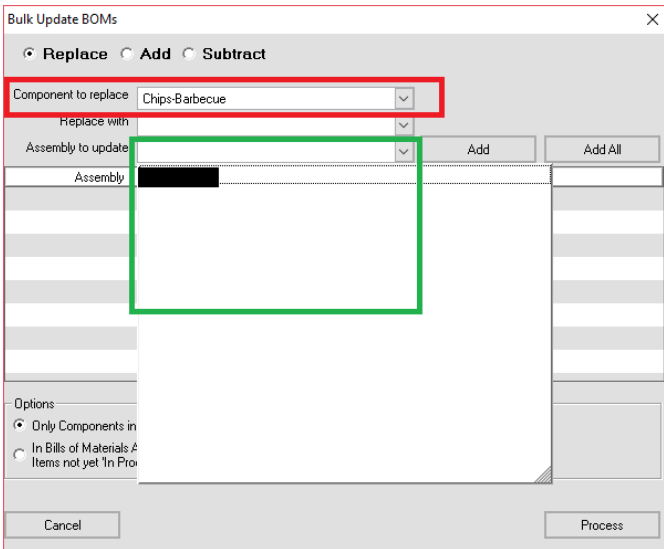
## Method 1:

Go to the "Production" menu--> select " Bulk Update BOM"



Enter the component name in the " component to replace" section

In the Dropdown Menu for " assembly to update" you will see a list of all the BOM's that contain that Item.



## METHOD 2:

Open your Item list and locate the component--> open the component--> In the PRINT dropdown menu select "Components used in Items" and press PRINT

